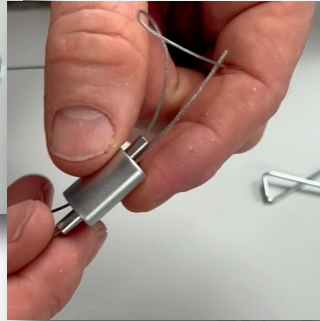
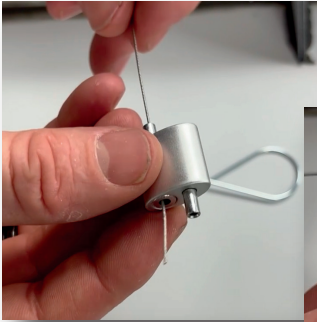


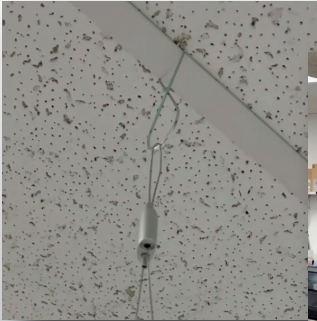
# 3SIDE HANGING SIGN ASEMBLY



1

## SECURE MAIN WIRES & CLIPS

YOU MAY USE THE INCLUDED HARDWARE TO SET THEM UP AS DIRECTED.



2

## CONNECT CABLES TO THE CEILING

IF **NOT** USING PROVIDED HARDWARE: ENSURE YOUR HARDWARE CAN SUPPORT EXCESS OF 20 POUNDS OF WEIGHT.

**ACTUAL 3-SIDED SIGN WEIGHTS 9 POUNDS.**

ALIGN CLEATS WITH NOTCHES AND SLIDE IN PLACE



3

## ATTACH SIDE PANELS

CAREFUL TO KEEP SIGN BALANCED WHILE INSTALLING PANELS.



4

#### **INSERT THUMBS CREWS**

THESE LOCK THE PANELS INTO THE MAIN BRACKET. BE SURE THEY ARE SECURED FIRMLY.



5

#### **INSERTS LOADING/UNLOADING**

SLIDE IN AND OUT FROM THE LEFT SIDE OF EACH PANEL. YOU CAN RE-ORDER INSERTS AT ANYTIME!

## **DISCLOSURE**

The customer and/or installer is solely responsible for ensuring the proper and secure installation of these aisle signs, including verifying the weight capacity and suitability of all mounting techniques and hardware, ensuring all cables, fasteners, and structural supports are properly secured and free from defects such as fraying, unraveling, or detachment over time, and following all applicable safety regulations and best practices for overhead sign installation based on the location and building structure. External factors such as HVAC systems, condensation, wind, and forklift activity must also be considered, as they may impact the integrity of the installation. Caution should be used when adjusting or changing inserts over time. Failure to properly secure overhead signs may result in serious injury or death. The Sign Dude Inc. assumes no liability for improper installation, inadequate mounting, or any resulting damages or injuries. Warranty coverage is limited to the replacement of the original sign panel due to material failure, with no further warranty implied. For best results, we strongly recommend installation by a licensed and experienced professional contractor.